

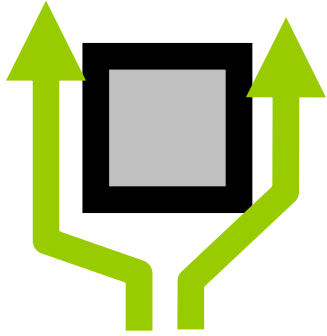
Green Design

Intelligence in Building

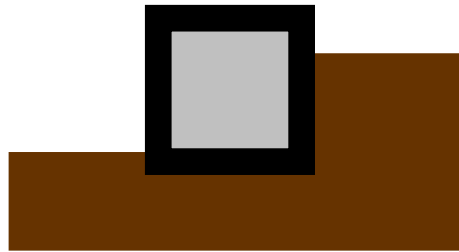
ecosystem



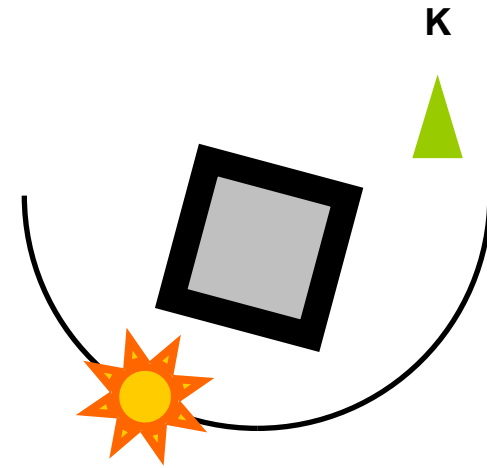
form and location



COMPACT FORM

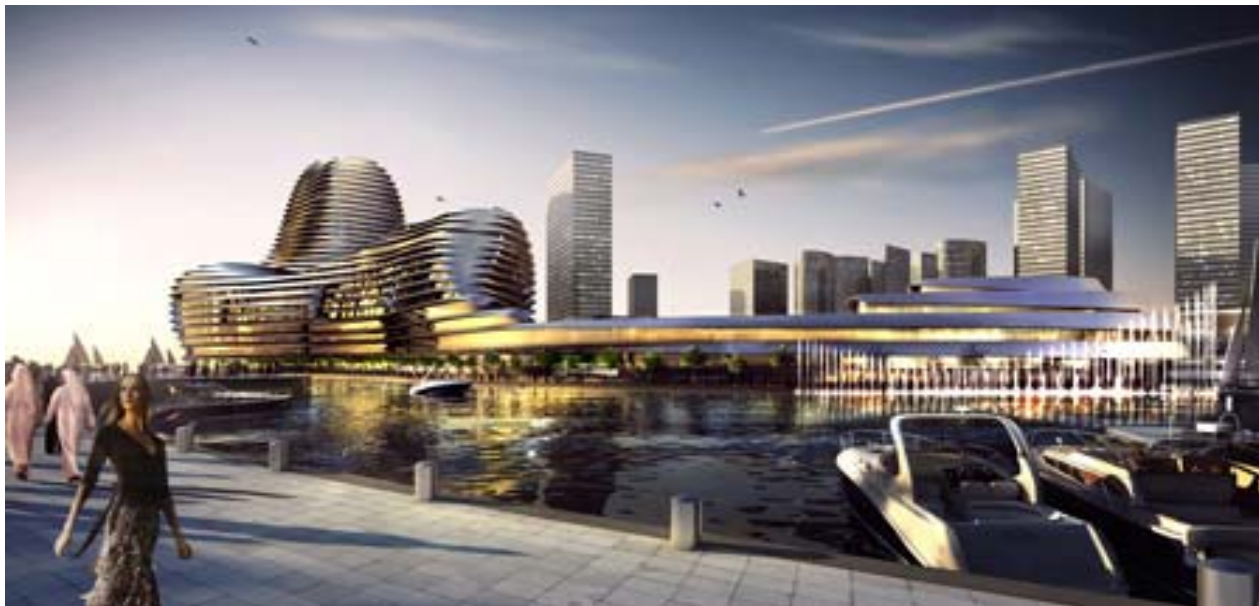
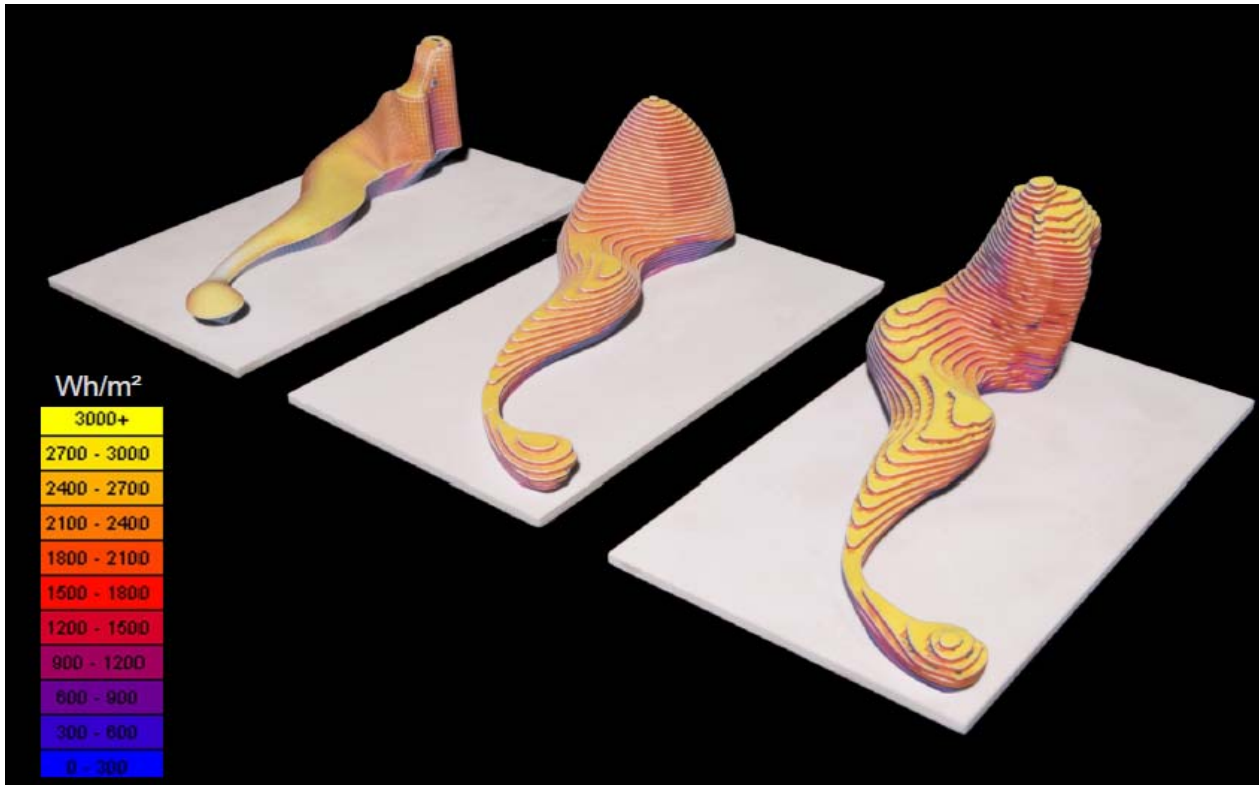


EMBEDDED INTO GROUND



CORRECT ORIENTATION





Foster + Partners
Raha Beach, Abu Dhabi

natural lighting



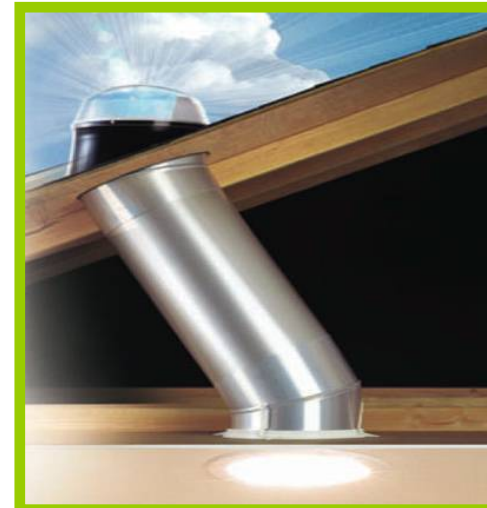
DAYLIGHTING



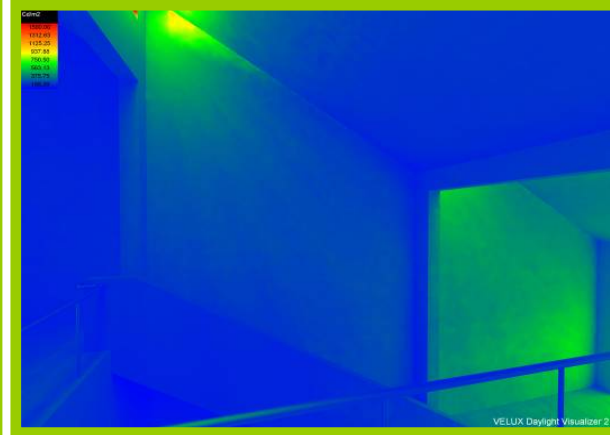
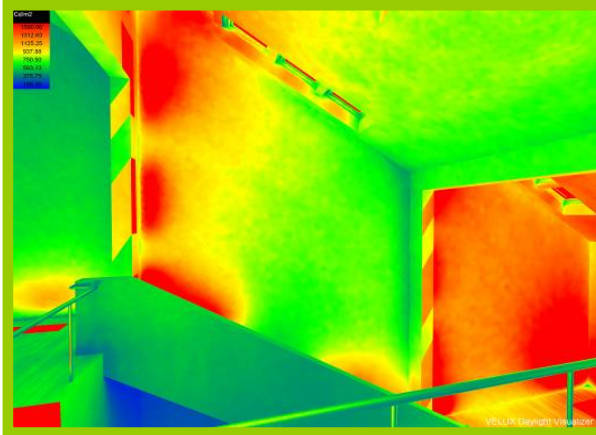
ROOF WINDOWS



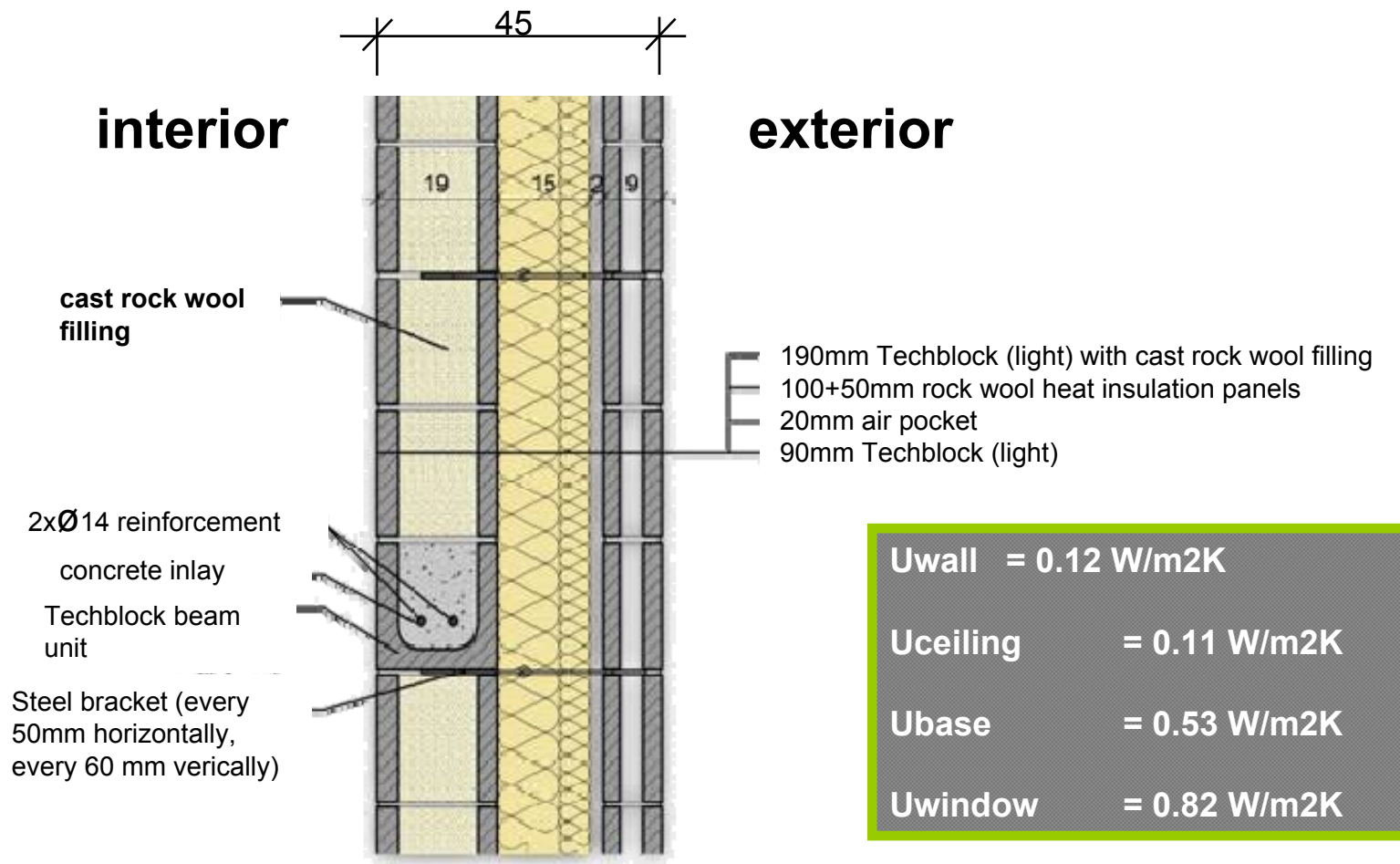
SOLAR TUBES



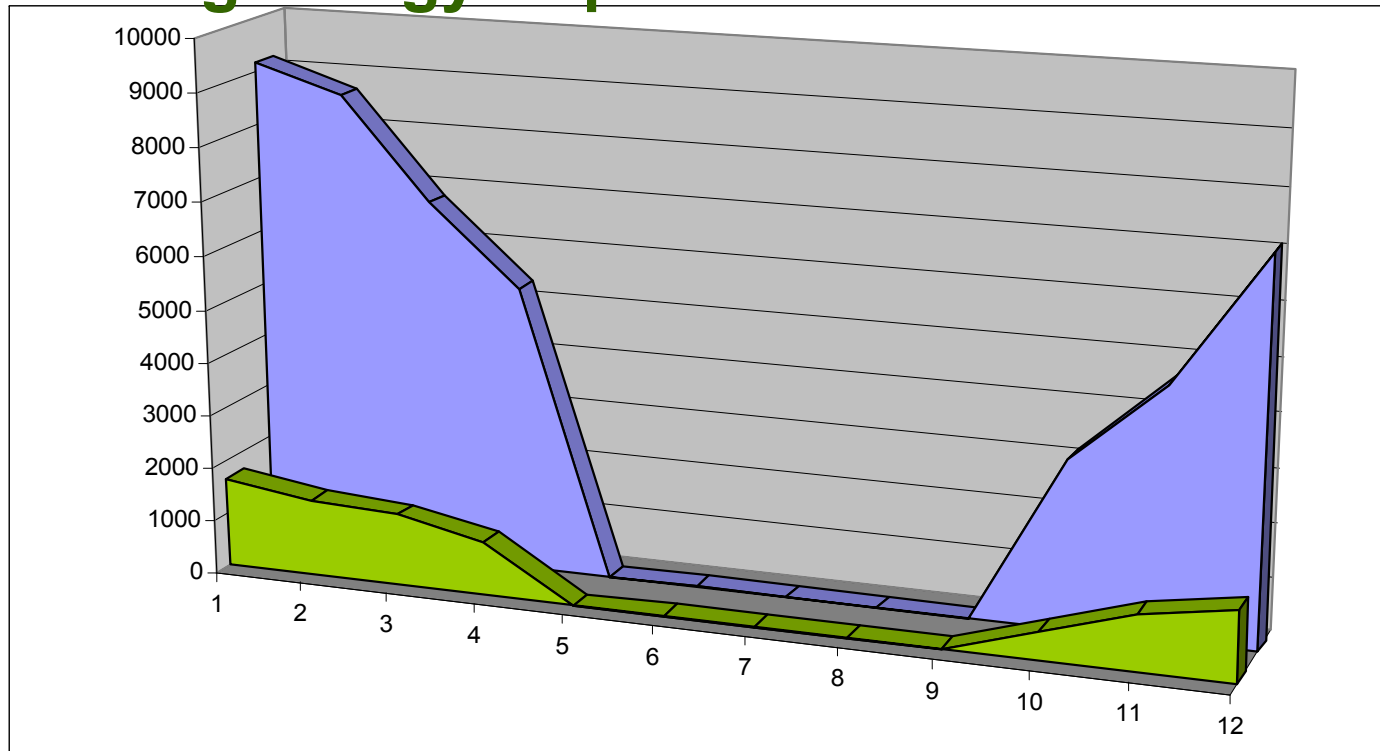
daylighting



“super insulated” structural shell



benchmark vs. superinsulation heating energy requirements



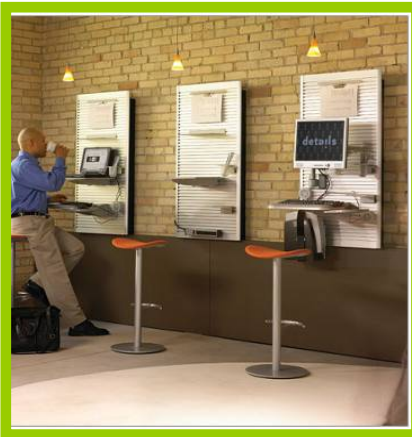
EKOyapı Monthly Heating Energy Requirement (kW)



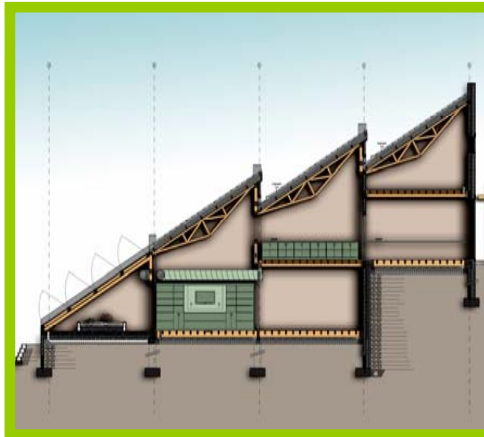
Monthly Heating Energy Requirement according to Turkish Standards (TS825)

”hoteling” alternative transport avoiding light pollution avoiding excavation

”HOTELING”



MIN. EXCAVATION



”GREEN” ACCESS



avoiding heat island effect

SHADING



REFLECTIVE ROOFS



LIGHT COLORED EXTERIOR



controlling rain water

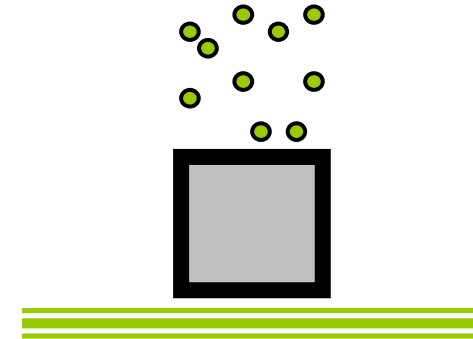
RAIN WATER
FRIENDLY DESIGN



CONDUCTIVE TILES



RAIN WATER
STORAGE



landscape without watering

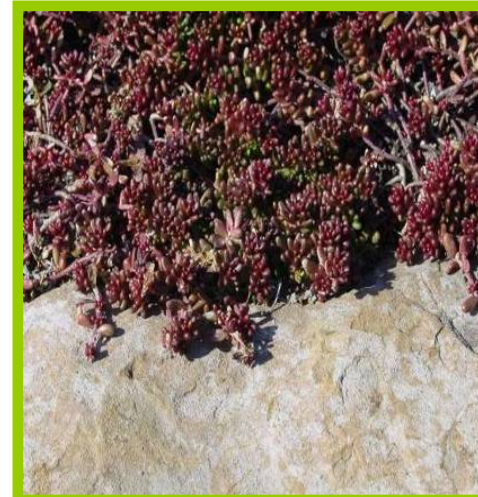
PROTECTING EXISTING
VEGETATION



MINIMUM LANDSCAPE



“NO WATER”
EXTENSIVE PLANTING



**“green design”
is re-creating the ecosystem**

